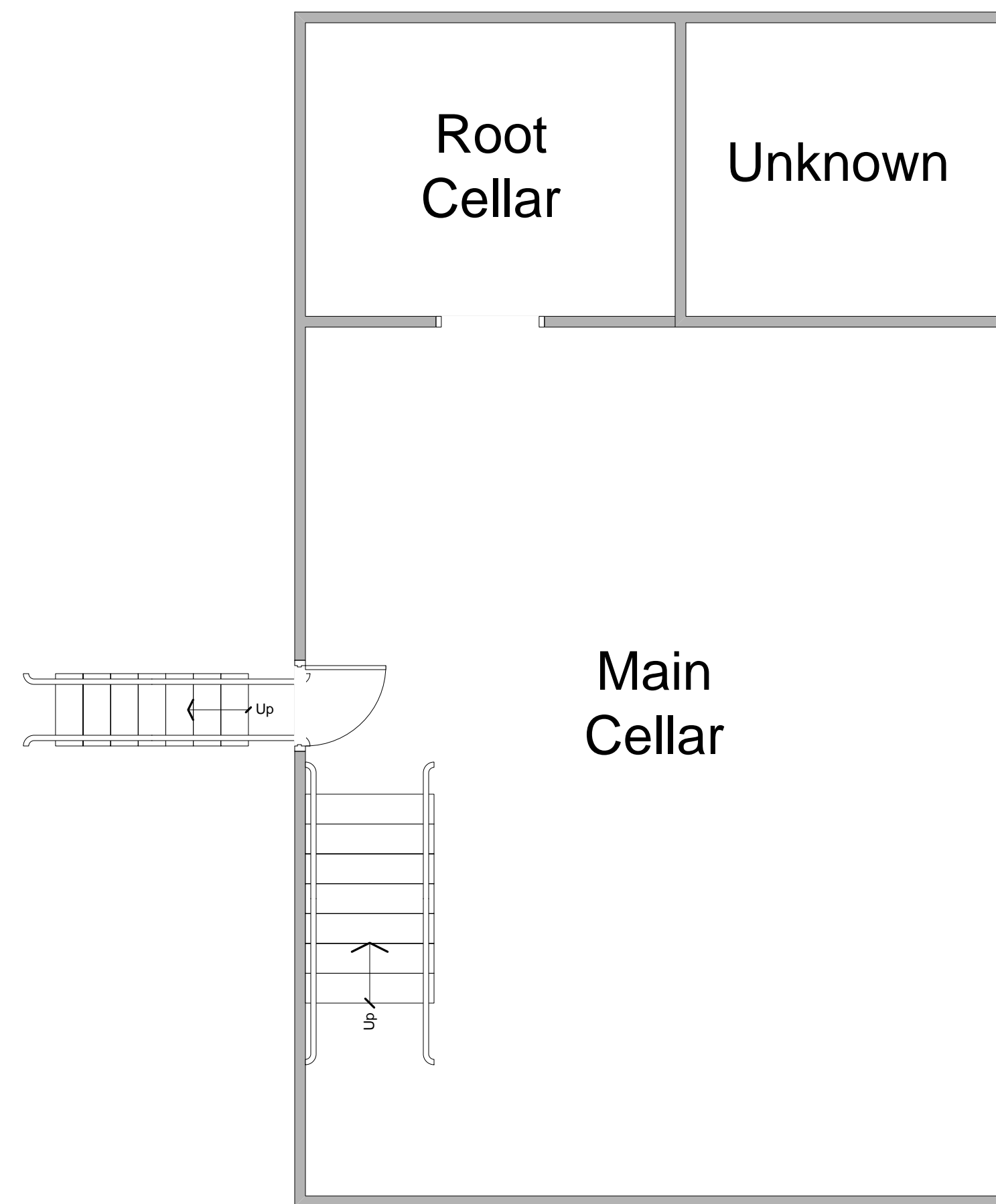


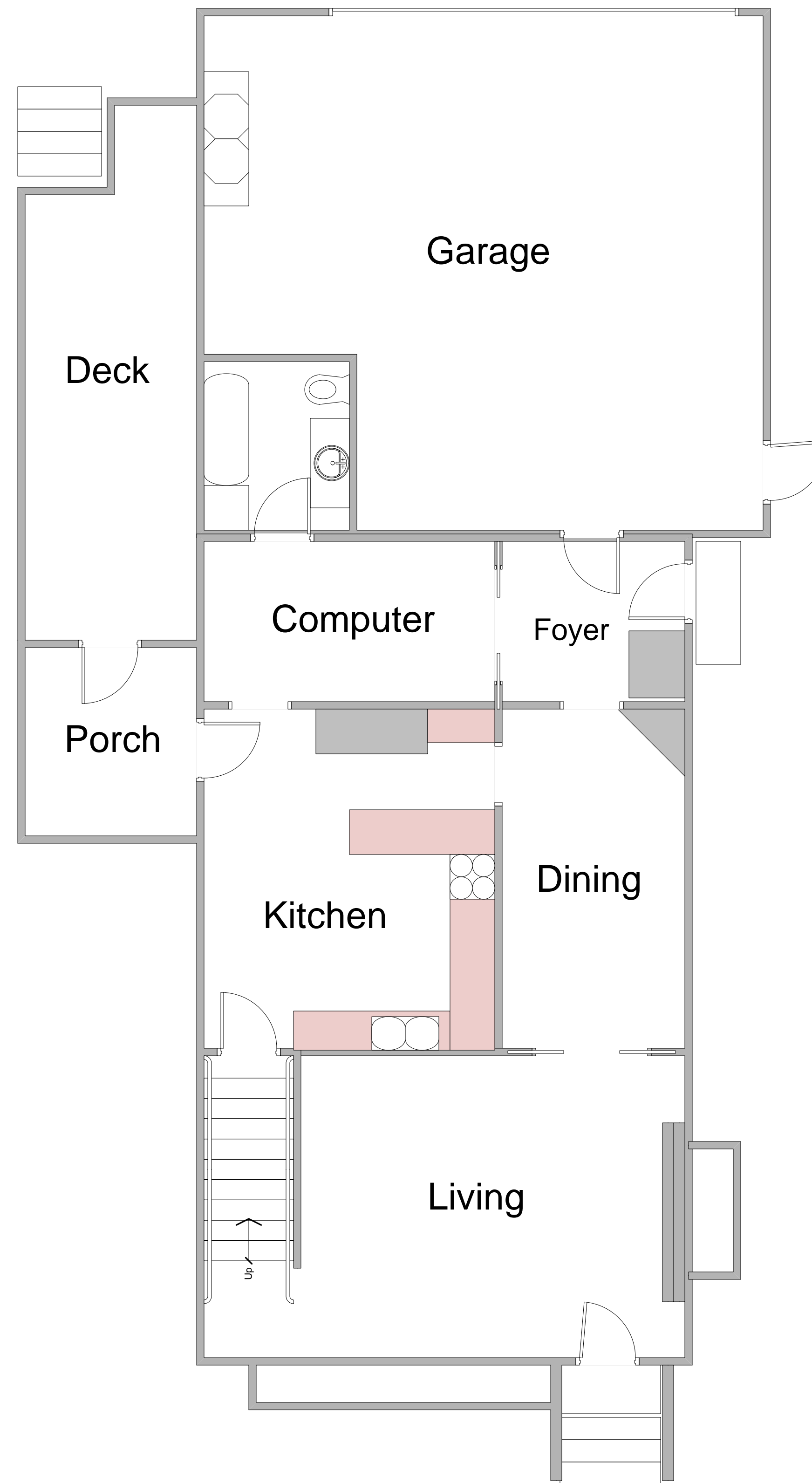
Main House Dimensions: (Exterior)
 Width (East to West) – 23 Feet – South Face
 Length (North to South) - 38' 6" – East Face
West Porch: (Exterior)
 Width (East to West) - 8' 10" – South Face
 Length (North to South) - 10' 7" – West Face
Deck: (Exterior)
 Width (East to West) - 8' 2" – South End
 Length (North to South) - 24' – East Side
 Deck Stair "Notch" - 4' Square

Garage Dimensions: (Exterior)
 Width (East to West) -- 27' 1" – North Face
 Length (North to South) -- 24' – West Face
 Overhead (Garage Door) -- 18' Wide -- 8' High
 Exterior Garage Footprint – 650 Square Feet
 Main House Footprint – 997.12 Square Feet
 Total Living Space – 1882.5 Square Feet

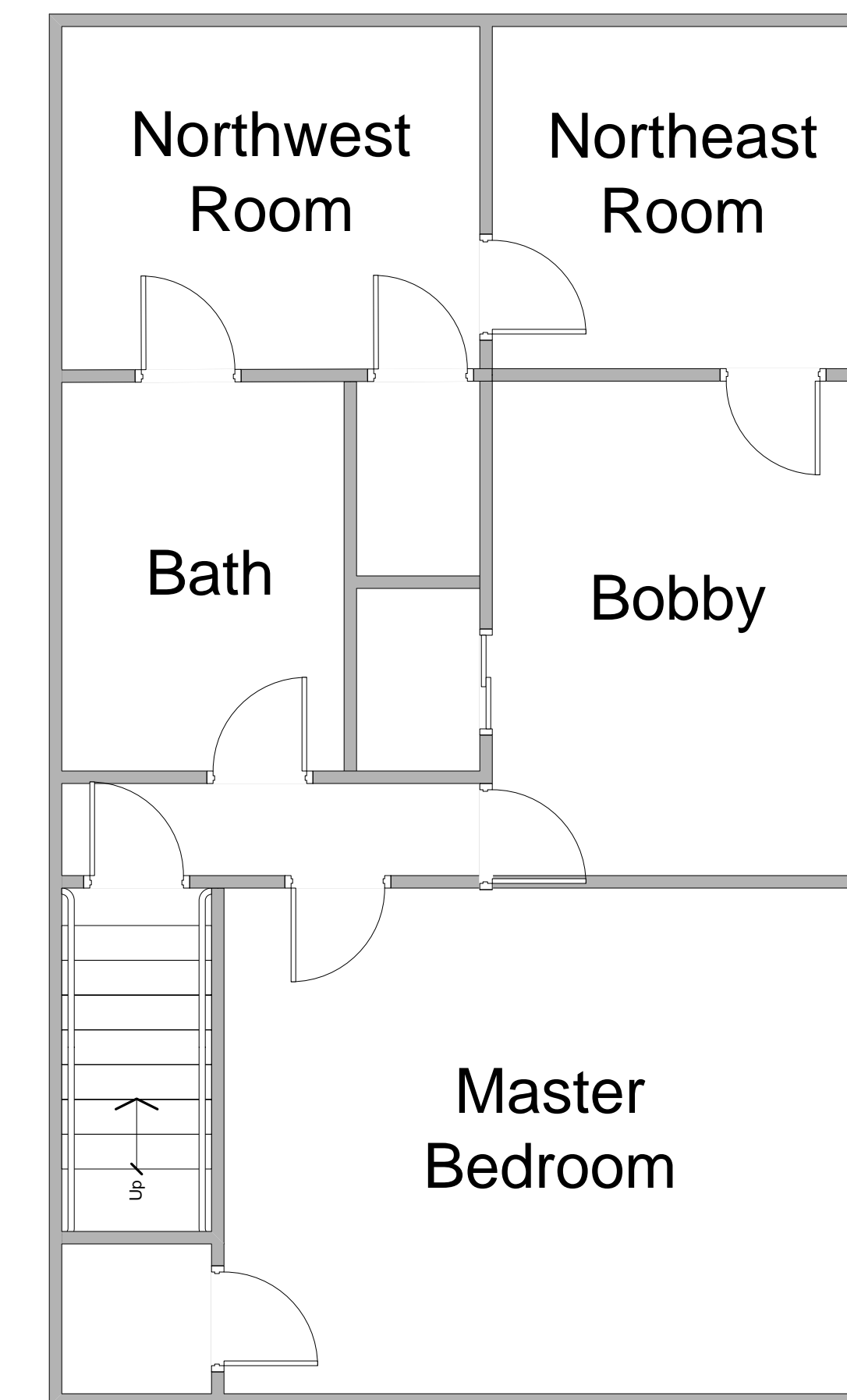
 Drawing is Scaled from Interior Measurements and is only accurate to +/- 6 inches given irregular wall thickness and a general lack of anything true or plumb in the structure.



**Basement
 General Plan
 (Approximate)**



**Ground Floor
 General Floorplan**



**Second Floor
 General Floorplan**

Edie's "New" House
 (Sammy's Old House)
 Route-18
 Lundy's Lane (Wellsburg) Pennsylvania
 June 20, 2011